



Deutsche Börse AG

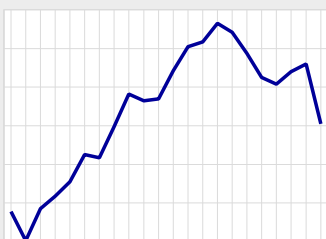
ISIN: DE0005810055
 WKN: 581005
 Symbol: DB1
 Description: DEUTSCHE BOERSE NA O.N.
 Country: Germany
 Specialist: ODDO BHF CORPORATES + MARKETS AG
 Designated Sponsor: RENELL WERTPAPIERHANDELSBANK AG

Transparency Level: Prime Standard
 Xetra Market Segment: Prime Standard (RM)
 Trading Model: CONT.TRDG.INCL.IAUCT
 Frankfurt Market Segment: Xetra Frankfurt 2 - (RM)
 Trading Model: CONTINUOUS AUCTION BY SPECIALIST

Supersector: FIRE (Financials u. Real Estate)
 Sector: Financial services
 Subsector: Securities Brokers

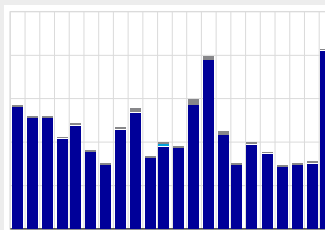
Affiliation Leading Indices: DAX (PERFORMANCE-INDEX)
 PRIME ALL SH. P-IN.

Price



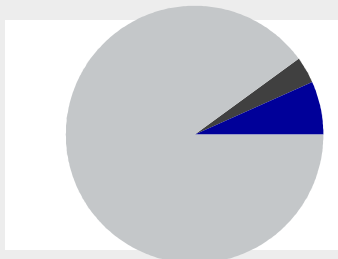
Last of month	
Xetra	146.10
Frankfurt	146.70
Min	
Xetra	140.05
Frankfurt	140.35
Max	
Xetra	151.30
Frankfurt	151.50

Turnover



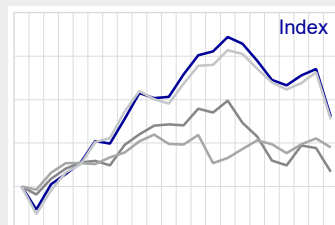
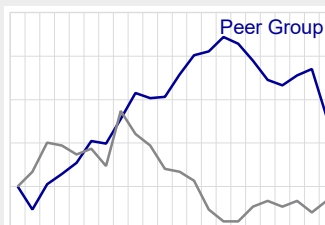
Turnover (€)	
Xetra	965,837,310
Frankfurt	1,336,336
Other	21,650,996
Total	988,824,642
Turnover (Units)	
Xetra	6,595,832
Frankfurt	9,089
Other	147,760
Total	6,752,681

Shareholder Structure

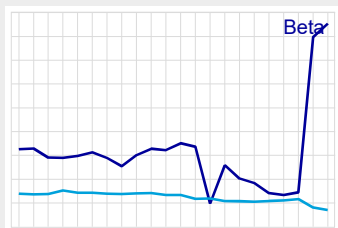


End of month	%
Non free float	3.41
Free float	96.59

Price Performance Comparisons

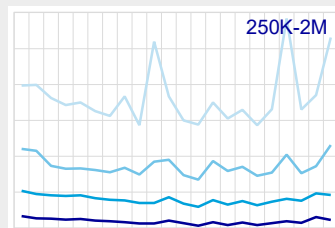
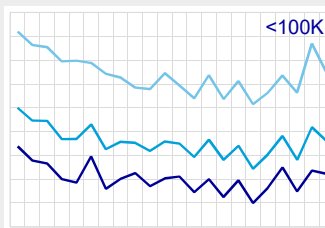


Index Affiliation

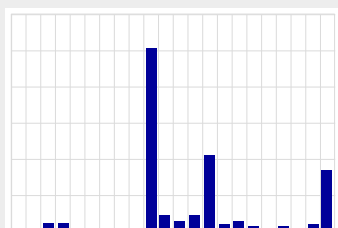


DAX (PERFORMANCE-INDEX)	
Index	DAX
Rank Market Cap.	16
Rank Turnover	19
MDAX (PERFORMANCEINDEX)	
Index	DAX
Rank Market Cap.	16
Rank Turnover	19

Liquidity (XLM)

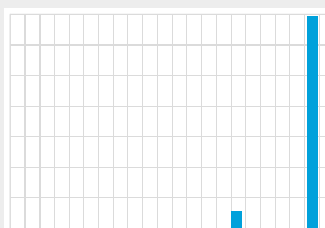


Eurex



Total Volumes	
Traded Contracts	12,135
Capitalised Volume (Mio. EUR)	178
Trades Eurex	647

Börse Frankfurt Zertifikate Premium



Total Volumes	
Orderbook	1,507
Turnover (€)	